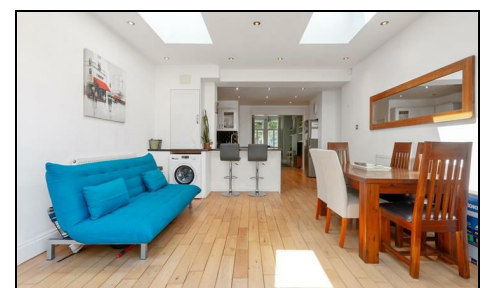
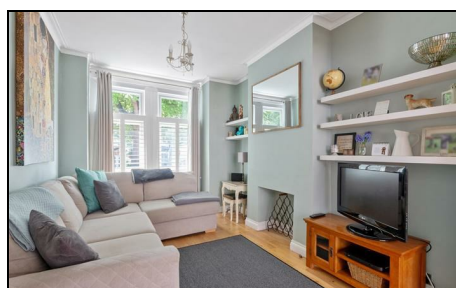
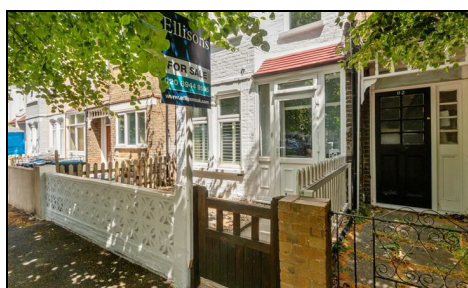


## Vernon Avenue Raynes Park, SW20 8BW

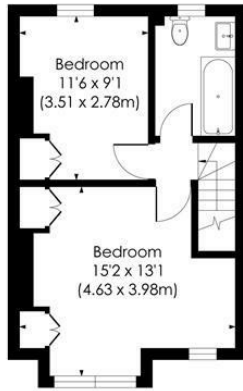
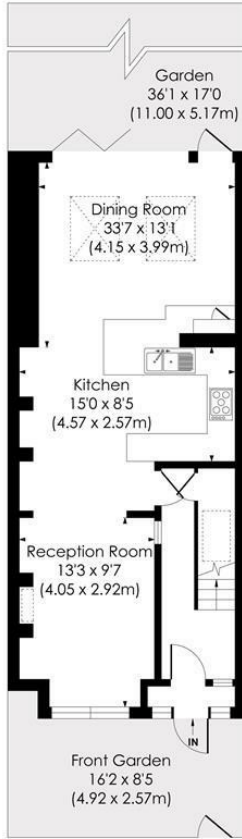
Offers Over £800,000 Freehold



**This delightful TWO DOUBLE BEDROOM, rear extended Edwardian Apostle House benefits from a lovely open plan lounge/ kitchen/dining and family area with bifolding doors leading to a good sized rear garden. Perfectly located for Raynes Park Station (0.6 Miles) and easy access into Wimbledon. The home is well presented with a pretty painted facade, an entrance hall, front reception area with plantation shutters, a superb open plan kitchen/dining/family area with bifolding doors, two double bedrooms and a family bathroom. Excellent potential to further extend into the loft space S.T.P.P.**

**VERNON AVENUE, SW20**

Approx. Gross Internal Floor Area  
**930 Sq. ft/86.42 Sq. m**

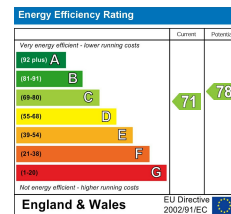


© Pixangle Property Marketing Ltd. info@pixangle.com Tel: 0208 870 2118



This floor plan has been prepared for the purpose of illustration only in accordance with the latest RICS code of measuring practice and is not to scale. All measurements and areas are approximate and whilst every effort has been made to ensure the accuracy of the plan contained here, no responsibility is taken for any error, omission or misstatement.

- Two Bedrooms
- Open Plan Ground Floor
- Bifold Doors
- Sought After Road
- Rear Extension
- Generous Rear Garden
- Close to Raynes Park and Wimbledon Chase Stations
- Potential To Extend Into The Loft S.T.P.P
- EPC Rating - C
- Council Tax Band - D



**For Free Mortgage Quote and Best Mortgage Rates, call Ellisons Mortgage Advisor on 0208 944 9595**



Although these particulars are believed to be correct, their accuracy is not guaranteed and they do not form part of any contract.

**Celebrating 30 years of successful Sales and Lettings in Merton**

